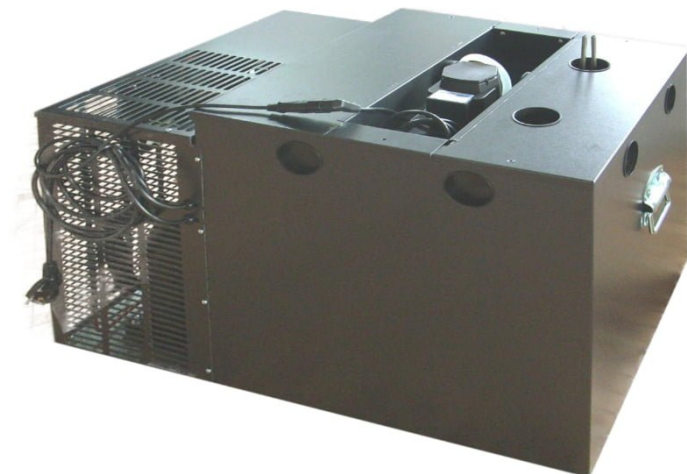


TC BC245UCH | Beer cooler with 1/2 HP compressor and 6 pcs spirals

SKU: 16533

ADDITIONAL INFORMATION

| | |
|---------------------------------|------------------------|
| Weight | 60 kg |
| Dimensions | 560 × 795 × 685 mm |
| Brand | TC |
| Packaging dimension (Wi) | 795 |
| Packaging dimension (De) | 560 |
| Packaging dimension (He) | 685 |
| External size (Wi) | 770 |
| External size (De) | 535 |
| External size (Hi) | 585 |
| Gross weight (kg) | 60 |
| Voltage (V/Hz) | 230/50 |
| Power (W) | 600 |
| Refrigerant type | R290 |
| Ice bank weight (kg) | 30 |
| Peak performance (l/h) | 245 |
| Compressor capacity (Hp) | 1/2 |
| Net weight (kg) | 56 |



PRODUCT DESCRIPTION

TC BC245UCH - Under the counter beer cooler with mechanical temperature controller. The horizontal beer cooler is equipped with recessed mixer motor, 6 pcs of beer coils and 1/2 Hp compressor. The product is made of plastic-coated galvanized sheet

ADDITIONAL INFORMATION

| | |
|---------------------------------|------------------------|
| Weight | 60 kg |
| Dimensions | 560 × 795 × 685 mm |
| Brand | TC |
| Packaging dimension (Wi) | 795 |
| Packaging dimension (De) | 560 |
| Packaging dimension (He) | 685 |
| External size (Wi) | 770 |
| External size (De) | 535 |
| External size (Hi) | 585 |
| Gross weight (kg) | 60 |
| Voltage (V/Hz) | 230/50 |
| Power (W) | 600 |
| Refrigerant type | R290 |
| Ice bank weight (kg) | 30 |
| Peak performance (l/h) | 245 |
| Compressor capacity (Hp) | 1/2 |
| Net weight (kg) | 56 |

